

GARDENLINE®

Flameless Candle Lantern

User Guide

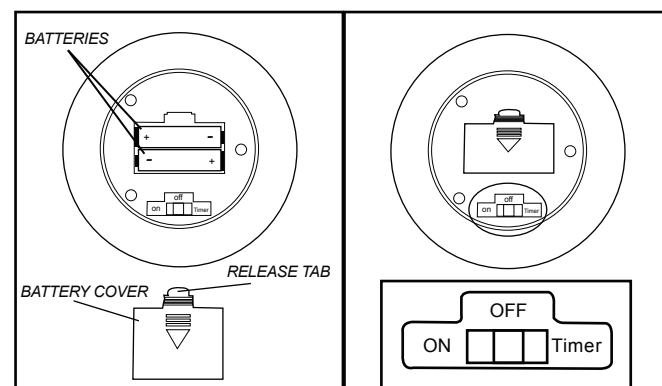


BATTERY INSTALLATION

Candles require 2 AA batteries.

WARNING: Do not mix old and new batteries. Do not mix alkaline, standard (Carbon-zinc) or rechargeable (Ni-Cd, Ni-Mh, etc) batteries.

1. Press the release tab and pull up to remove the battery cover.
2. Insert the 2AA batteries into the battery compartment. Make sure to match the + and - signs to ensure proper operation.
3. Replace the battery cover.



OPERATION

ON/OFF MODE

1. To turn the light on slide the switch to the "ON" position.
2. To turn the light off slide the switch to the "OFF" position.

TIMER MODE

1. To activate the timer, slide the switch to the "TIMER" position. After 5 hours the light will turn itself off.
2. The light will turn itself back on the next day at the same time it was set on timer the previous day, then will turn off again after 5 hours.
3. To change the starting time, slide the switch to the "OFF" position then back to the "TIMER" position at the time you want it to turn on the next day.

Regulatory Statement and Label Marking Advice for the FCC Verification (Class B)

1. Marking suggested for the Label:

This device complies with Part 15 of the FCC Rules. Operation is subject to the following two conditions:

- (1) this device may not cause harmful interference, and
- (2) this device must accept any interference received, including interference that may cause undesired operation.

2. Regulatory Statement suggested for the User Manual:

Warning: Changes or modifications to this unit not expressly approved by the party responsible for compliance could void the user authority to operate the equipment.

Notes: This equipment has been tested and found to comply with the limits for a Class B digital device, pursuant to Part 15 of the FCC Rules. These limits are designed to provide reasonable protection against harmful interference in a residential installation. This equipment generates, uses and can radiate radio frequency energy and, if not installed and used in accordance with the instructions, may cause harmful interference to radio communications.

However, there is no guarantee that interference will not occur in a particular installation. If this equipment does cause harmful interference to radio or television reception, which can be determined by turning the equipment off and on, the user is encouraged to try to correct the interference by one or more of the following measures:

- Reorient or relocate the receiving antenna.
- Increase the separation between the equipment and receiver.
- Connect the equipment into an outlet on a circuit different from that to which the receiver is connected.
- Consult the dealer or an experienced radio/TV technician for help.



GARDENLINE®

Flameless Candle Lantern LIMITED WARRANTY

The manufacturer warrants this product against defects in material or workmanship for a period of one (1) year from the date of original purchase. The manufacturer agrees to refund or replace it, at the sole discretion of the manufacturer. Only the original purchaser of this product is extended this warranty. Proof of the date of purchase must be provided to the manufacturer if the product is returned. Purchasing this product from a third party vendor negates all warranties (expressed or implied) in this warranty.

The warranty applies to the operating portion of the LED candle.

The warranty does not apply to the following terms/conditions: 1.) acts of God, 2.) products that have been subjected to unauthorized repair, opened, disassembled, and/or otherwise modified, 3.) products used not in accordance with directions, 4.) damages exceeding the total cost of product, 5.) batteries, 6.) wax, 7.) damages caused by shipping, improper handling, accident, misuse or abuse. The manufacturer is not responsible for damage of merchandise in transit. Repaired or replaced products shall be subject to the terms of this warranty and are inspected prior to return shipment. Damages that are incurred during transit should be reported at once to the carrier and a claim should be filed with them.

THE MANUFACTURER SHALL NOT BE LIABLE FOR INCIDENTAL, SPECIAL OR CONSEQUENTIAL DAMAGES RESULTING FROM THE USE OF THE PRODUCT OR ARISING OUT OF ANY BREACH OF THIS WARRANTY. ALL IMPLIED WARRANTIES, IF ANY, INCLUDING IMPLIED WARRANTIES OF MERCHANTABILITY AND FITNESS FOR A PARTICULAR PURPOSE, ARE LIMITED IN DURATION TO THE DURATION OF THIS EXPRESS WARRANTY. Some states do not allow the exclusion or limitation of incidental or consequential damages, or limitations on how long an implied warranty lasts, so the above exclusions or limitations may not apply to you. No other warranty, written or verbal, will be honored for this product. This warranty grants you specific legal rights, you may also have other rights which vary from state to state. There are no other warranties except those stated above.

Your details:

Name: _____

Address: _____

E-mail: _____

Date of purchase: _____

* We recommend you keep the receipt with this warranty card

Location of purchase: _____

You will need the following information:
Model/Item Number of Product, Receipt,
and Date of Purchase

1
YEAR WARRANTY

AFTER SALES SUPPORT

1 877 282 6195 Service Hours: Monday to Friday, 9am - 5pm cst.

ITEM #: 43040-14

Return your completed warranty card to:

Orbit Industries, LLC
7101 N. Ridgeway Ave.
Lincolnwood, IL 60712
info@orbithome.com

Description of malfunction: