




KITCHEN *Living*

Electric Can Opener USER GUIDE



Now that you have purchased a Kitchen Living product you can rest assured in the knowledge that as well as your 2 year parts and labor warranty you have the added peace of mind of dedicated helplines and web support.

AFTER SALES SUPPORT

 866-235-5029

 mp656@messageplex.com

MODEL NUMBER: 44192, 11/14, CO-01

Welcome!

You have made an excellent choice with the purchase of this quality Kitchen Living brand product.

By doing so you now have the assurance and peace of mind which comes from purchasing a product that has been manufactured to the highest standards of performance and safety, supported by the high quality standards of ALDI.

We want you to be completely satisfied with your purchase so this Kitchen Living product is backed by a comprehensive 2 year manufacturer's warranty and an outstanding after sales service through our dedicated helpline.

We hope you will enjoy using your purchase for many years to come.

If you require technical support, or in the unlikely event that your purchase is faulty, please telephone our helpline for immediate assistance. Faulty product claims made within the 2 year warranty period will be repaired or replaced free of charge, provided that you have satisfactory proof of purchase (keep your receipt safe!). This does not affect your statutory rights. However, be aware that the warranty will become null and void if the product is found to have been deliberately damaged, misused or disassembled.



Contents

- 01 Welcome
- 03 Important Safeguards
- 05 Parts List
- 06 Instructions
- 09 Care and Maintenance
- 10 Environment Friendly Disposal & Specifications
- 11 Warranty Card



Important Safeguards

Read this manual thoroughly before first use and keep it in a safe place for future reference, along with the completed warranty card, purchase receipt and carton. The safety precautions enclosed herein reduce the risk of fire, electric shock and injury when correctly followed. If applicable, pass these instructions on to the next owner of the appliance.

Always follow basic safety precautions and accident prevention measures when using an electrical appliance, including the following:

- The appliance is not intended for use by persons (including children) with reduced physical, sensory or mental capabilities, or lack of experience and knowledge, unless they have been given supervision or instruction concerning use of the appliance by a person responsible for their safety.
- Young children should be supervised to ensure they do not play with the appliance. Close supervision is necessary when any appliance is used by or near children.
- This appliance is intended for household use only. It is not suitable for commercial/industrial use.
- Do not use this appliance outdoors or in areas with high humidity.
- Do not use the appliance for any other use than its intended purpose, and only use it as described in this manual.
- Improper installation and the use of accessory attachments not recommended or sold by the appliance manufacturer may cause injuries.
- Do not place the appliance near the edge of the counter.
- Do not use this appliance with an external timer or a separate remote control system.
- Do not leave appliance unattended while in use. Always disconnect it from the power outlet.
- Avoid contact with moving parts.
- Do not open pressurized cans.
- Do not open cans of flammable liquids such as lighter fluids.
- This can opener should not be used to open cans designed to open by another method, such as a pull tab, peel-off foil seal, or rolling key.
- This can opener should not be used to open rimless cans or cans with angled corners.
- If there is a dent in the rim of a can, open the other end or start the cutting action just beyond the dent.
- Cans with heavy seams, uneven rims or odd shapes may cause the can opener to stall. If this occurs, turn the can slightly by hand to aid the cutting action.

HOUSEHOLD USE ONLY

3

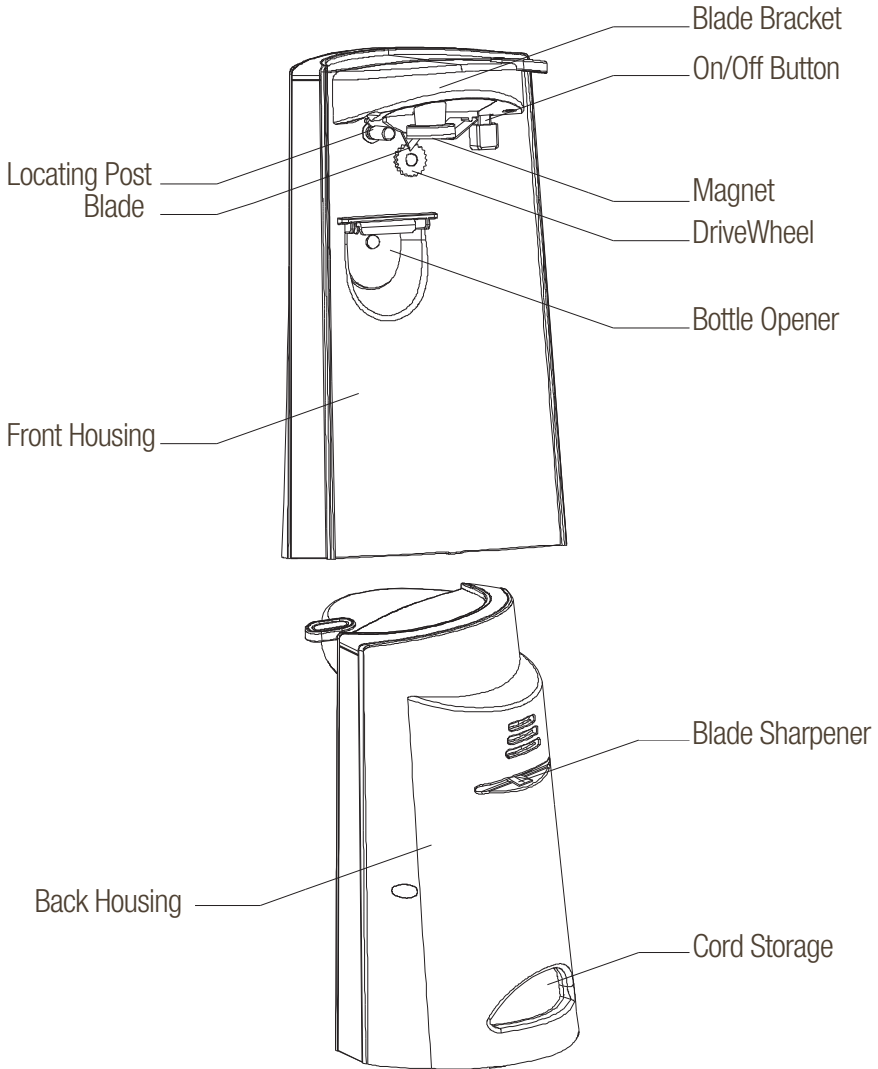
Important Safeguards (Cont.)

- Frozen juices or foods in cardboard cans should be opened as soon as they are removed from the freezer.
- Aluminum lids will not be stuck to the magnet.
- When not in use, store your appliance and its instruction manual in a safe and dry place.
- Maintain the appliance in accordance with the instructions to ensure that it functions properly.
- If there is a product malfunction, or if it has been damaged in any way, call the After Sales Support for assistance.
- Immediately unplug the appliance if fire or smoke is emitted.
- At the end of its working life, do not throw this appliance out with your household rubbish. Observe any local regulations regarding the disposal of electrical consumer goods and dispose of it appropriately for recycling. Disable it in an obvious way, so that it does not represent a hazard to others. Contact your local authorities for advice on recycling facilities in your area.
- To protect against electric shock do not immerse cord or plugs in water or other liquid
- Do not operate any appliance with a damaged cord or plug or after the appliance malfunctions, or has been damaged in any manner. Please call our service center for instructions.
- Do not let cord hang over edge of table or counter, or touch hot surfaces.
- This appliance features a short power cord to reduce the risk of being entangled, and to reduce the risk of tripping. An extension cord or longer detachable cord is not recommended for use with this product.
- There are no user-serviceable parts inside. Do not attempt to service this product. Please call our service center for instructions.
- This appliance has a polarized plug (one blade is wider than the other). To reduce the risk of electric shock, this plug is intended to fit into a polarized outlet only one way. If the plug does not fit fully into the outlet, reverse the plug. If it still does not fit, contact a qualified electrician. Do not attempt to modify the plug in any way.

SAVE THESE INSTRUCTIONS

Parts List

Before operating this unit, please read these instructions completely.



Instructions

Before First Use

- Unpack the appliance but keep all packaging materials until you have made sure your new can opener is undamaged and in good working order.
- Plastic wrapping can be a suffocation hazard for babies and young children, so ensure all packaging materials are out of their reach.

Using the can opener

- To attach blade bracket to the can opener, make the key tabs align with the key slots, push it frontward to fix it (see Fig. 1), then press down the blade bracket to ensure it has been assembled in place (see Fig. 2). Then lift the blade bracket.

Fig. 1

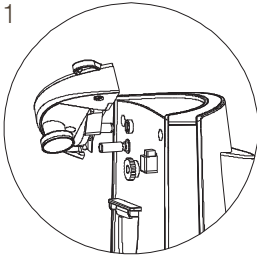
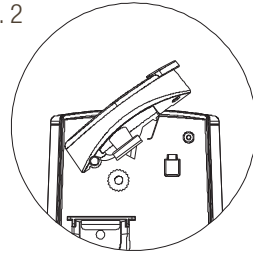
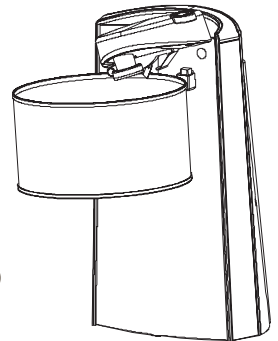


Fig. 2



- Unwind the cord to its full length and inspect it for damage. Do not use the appliance if the appliance or its cord have been damaged or are not working properly.
- Place the appliance on a flat, dry surface.
- Connect to the power source. Make sure that the can opener voltage (see rating plate) and the line voltage match.
- Raise the blade bracket enough to wedge the can between the cutting blade and feed gear. (see Fig 3.)
- Press the bracket down all the way to pierce the lid and start the cutting process. When you push down the bracket the motor will start rotating the can.
- When the can is opened, the can opener will stop automatically. To remove the can, hold it with one hand and raise the blade bracket with the other hand.

Fig. 3



Instructions (Cont.)

NOTE: The can required to be opened should be between 2 inches (50mm) to 4 inches (100mm) in diameter and 7 inches (178mm) max in height. In the case total weight of can is over 18 Oz (510g), it is necessary to press and hold the can opener to avoid overturning. DO NOT operate the can opener continuously for more than 1 minute. After opening 10 cans consecutively the can opener must cool down for at least five minutes.

CAUTION: Avoid contacting with the cut edges of the can or lids as they are sharp, carefully remove the lid from the magnet and discard.

Can opening tips

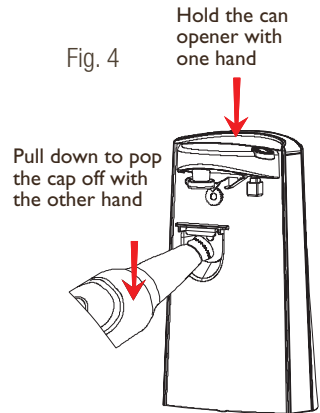
- This can opener should not be used to open cans designed to open by another method, such as a pull tab, peel-off foil seal, rolling key, rimless cans or cans with angled corners.
- If there is a dent in the rim of a can, open the other end or start the cutting action just beyond the dent.

Using the bottle opener

- Read this manual to familiarise yourself with appliance. Pay particular attention to the safety instructions on the previous pages.
- Unplug the appliance from the power supply before using the bottle opener.
- To open a bottle, grasp it and position the cap under the metal hook part in the bottle opener (see Fig. 4).

NOTE: Be sure the bottle neck is not under the metal hook part, or the glass may break. Hold the can opener with one hand and pull down to pop the cap off with the other one.

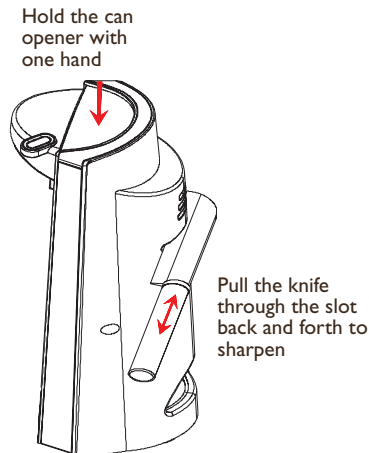
- The bottle opener will only remove metal bottle caps. Do not use it for a bottle with screw-off cap or pull ring cap.



Instructions (Cont.)

Using the knife sharpener

- Read this manual to familiarise yourself with appliance. Pay particular attention to the safety instructions on the previous pages.
- Unplug the appliance from the power supply before using the bottle opener.
- Place the knife which is intended to be sharpened in the slot of knife sharpener at the back of the unit. For best results, sharpen the entire length of the knife, pull the knife through the slot back and forth (see Fig. 5), until desired sharpness achieved.
- After sharpening, wash and dry the knife.



Knife sharpening tips

- Clean and dry knives before sharpening.
- Do not attempt to sharpen serrated blades, as this will smooth the edges.
- Do not attempt to sharpen scissors.

Care and Maintenance

CAUTION!

Always unplug the cord from the wall socket before cleaning.
Never immerse the can opener, cord or plug in water or other liquids.

Care and cleaning

- Before cleaning any part of the can opener, unplug the cord.
- To remove the blade bracket for easy cleaning, lift the blade bracket up and pull it out. The blade assembly can be cleaned with a damp cloth, then wiped with a sponge and dried thoroughly. It is not dishwasher-safe component. Reverse the procedure to replace the blade bracket.
- Before replacing the blade bracket, wipe the can opener housing, and area around the drive wheel with a slightly damp cloth or sponge. To remove stubborn spots, wipe surfaces with nylon or mesh pad and sudsy water, following with a clean, damp cloth. Do not use abrasive cleaners on any part of the can opener as they can damage the surface.
- Ensure the can opener is completely dry before next use.

Environment Friendly Disposal

Responsible disposal

At the end of its working life, do not throw this appliance out with your household trash.

Electrical and electronic products contain substances that can have a detrimental effect on the environment and human health if disposed of inappropriately. Observe any local regulations regarding the disposal of electrical consumer goods and dispose of it appropriately for recycling. Contact your local authorities for advice on recycling facilities in your area.



Specifications

Power Requirement

Input Voltage: 120V~ 60Hz

Power Consumption: 60W

KITCHEN *Living*

Electric Can Opener

Your details:

Name _____

Address _____



E mail _____

Date of purchase* _____

* We recommend you keep the receipt with this warranty card.

Location of purchase _____


Description of malfunction:

Return your completed warranty card to:

ALDI Customer Service

NW Fulfillment
549 Heartland Drive
Suite E
Sugar Grove IL 60554

AFTER SALES SUPPORT

 866-235-5029

 mp656@messageplex.com

MODEL: 44192, 11/14, CO-01

2

YEAR WARRANTY



