

User Manual

Manual del usuario


CROFTON®

FOOD CHOPPER

PICADORA



English 02
Español ... XX



Contents

- General information3**
 - Reading and storing the user manual3
 - Explanation of symbols.....3
- Safety3**
 - Proper use3
 - Safety instructions.....4
- Product contents/device parts.....5**
- First use6**
 - Checking the food chopper and package contents.....6
 - Basic cleaning.....6
 - Assembling the food chopper6
- Using the food chopper7**
- Cleaning.....8**
 - Cleaning the lid9
 - Cleaning the base container9
- Storage9**
- Technical data10**
- Disposal10**
 - Disposing of the packaging10
 - Disposing of the food chopper10

General information

Reading and storing the user manual



This user manual accompanies this food chopper and contains important information on setup and handling.

Before using the food chopper, read the user manual carefully.

This particularly applies to the safety notes. Failure to do so may result in personal injury or damage to the food chopper.

Store the user manual for further use. Make sure to include this user manual when passing the food chopper on to third parties.

Explanation of symbols

The following symbols and signal words are used in this user manual, on the food chopper or on the packaging.



This signal symbol/word designates a hazard with moderate risk, which may result in death or severe injury if not avoided.



This signal symbol/word warns of possible damage to property.



This symbol provides you with useful additional information on handling and use.



Food-safe! The taste and smell of your food are not affected by this product.



TOP RACK
DISHWASHER
SAFE

This product is dishwasher safe only when it is placed on the top rack of a dishwasher.

Safety

Proper use

The food chopper is exclusively designed for cutting fruits and vegetables. It is only intended for private use and not suitable for commercial purposes.

Only use the food chopper as described in this user manual. Any other use is considered improper and may result in personal injury or damage to property.

The manufacturer or vendor cannot be held liable for damages incurred through improper or incorrect use.

Safety instructions

IMPORTANT SAFEGUARDS

Read and fully understand all instructions and warnings prior to using the food chopper. Your safety is most important. Failure to comply with procedures and safeguards may result in serious injury or property damage.



Risk of injury!

Improper handling of the food chopper may result in injury.

- The food chopper is for HOUSEHOLD use only.
- Do not use the food chopper for other than its intended use.
- Use extreme care when handling the cutting blades. The blades are very sharp. Keep fingers clear of the blades at all times.
- Keep children away from the food chopper.
- Do not leave the food chopper unattended during use.
- Before using the food chopper, check that all parts are operating properly, and perform the intended functions. Do not use the food chopper if damage is found.
- Ensure that the food chopper is stable during use. The base container should be placed on a level and stable work surface. Do not move the food chopper during the cutting process.
- Never push food through the cutting blades with hands.
- Do not use the food chopper while under the influence of drugs or alcohol.
- Do not allow children to play with the blades or the packaging wrapper.

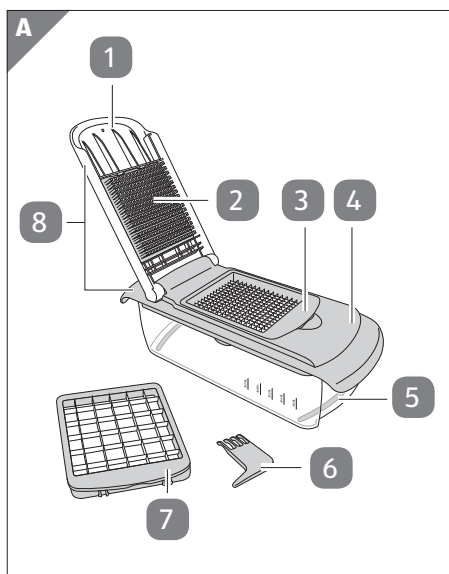
NOTICE!**Risk of damage!**

Improper handling of the food chopper may result in damage to the food chopper.

- Do not use the food chopper for frozen food, meat, fish, fruit or vegetable with pits, nuts or anything other than foodstuff. The food chopper is not suitable to cut hard items.
- Never place the food chopper on or near hot surfaces such as ovens or heaters. Keep it away from open fire.
- All parts of the food chopper are dishwasher safe only when placed on the top rack of the dishwasher.
- Never use the food chopper inside a microwave or oven.

SAVE THESE INSTRUCTIONS

Keep the user manual for future reference.

Product contents/device parts

- | | |
|---|------------------------------|
| 1 | Pusher |
| 2 | Push plate |
| 3 | Cutting blade (for dicing) |
| 4 | Chopper base |
| 5 | Base container |
| 6 | Cleaning tool |
| 7 | Cutting blade (for chopping) |
| 8 | Lid* |
| 9 | Pusher lock |

*The lid consists of the pusher and chopper base.

First use

Checking the food chopper and package contents

1. Take the food chopper out of the packaging and check whether the food chopper or any of the individual parts are broken or damaged. If this is the case, do not use the food chopper.

Be very careful when opening the packaging to prevent damage to the food chopper.

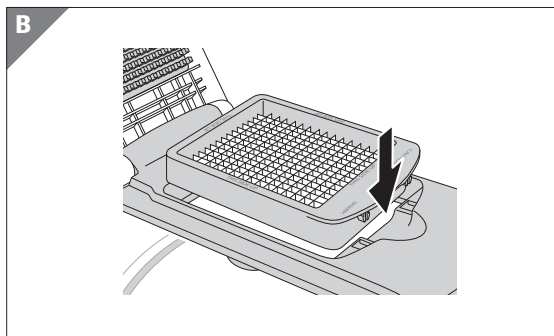
2. Check to make sure that all parts are included (see **Fig. A**).

Basic cleaning

1. Remove the packaging material and all plastic wrapping.
2. Clean all parts of the food chopper before first use as described in the chapter “Cleaning”.

Assembling the food chopper

1. Place the lid **8** onto the base container **5**.
2. Flip the pusher **1** open.
3. Select a cutting blade **3** or **7** and place it onto the chopper base **4** with the text “THIS SIDE UP” on the cutting blade facing upward (see **Fig. B**).



To replace the cutting blade, remove the installed cutting blade before placing the desired one onto the chopper base.

4. Close the pusher. The food chopper is now assembled and ready for use.
It is recommended to always close the pusher when the food chopper is not in use.

Using the food chopper



WARNING!

Risk of injury!

Improper handling of the food chopper may result in injury.

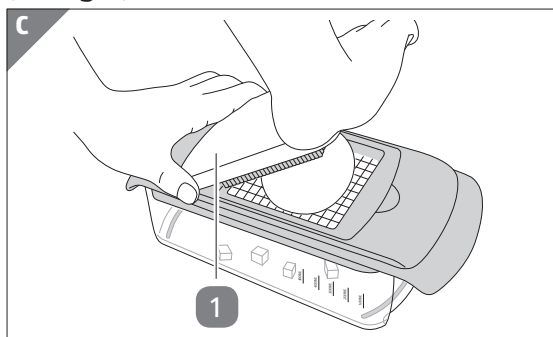
- Use extreme care when handling the cutting blades. The blades are very sharp. Keep fingers clear of the blades at all times.



Before using the food chopper:

- Peel fruit or vegetable with thick skin (e.g. onion),
- Remove stems and trim ends,
- Cut large fruit or vegetable into smaller pieces (must be smaller than the cutting blade).

1. Flip the pusher **1** open.
2. Place the fruit or vegetable you want to cut onto the cutting blade **3** or **7** with the flat or larger side facing down.
3. Close the pusher and press it downward onto the fruit or vegetable (see **Fig. C**).

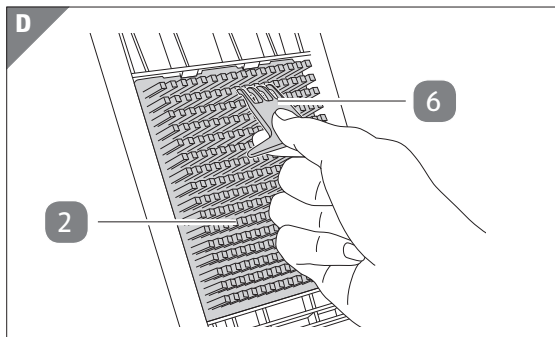


If necessary, use both hands to press the pusher downward.

The fruit or vegetable to be cut is pressed downward through the cutting blade.

4. Remove the lid **8** to empty the cut fruit or vegetable from the base container **5**.

5. If necessary, flip the pusher open and use the cleaning tool **6** to remove any food residuals on the push plate **2** before using the food chopper again (see **Fig. D**).



Cleaning

NOTICE!

Risk of damage!

Improper handling of the food chopper may result in damage.

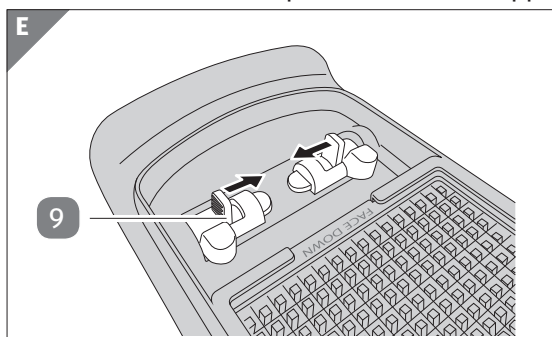
- Do not use any aggressive cleaners, brushes with metal or nylon bristles, sharp or metallic cleaning utensils such as knives, hard scrapers and the like. They could damage the surfaces.
- All parts of the food chopper are dishwasher safe only when placed on the top rack of the dishwasher.



The food chopper should be thoroughly cleaned before and after each use.

Cleaning the lid

1. The pusher **1** and chopper base **4** can be separated for cleaning. To do so, push the pusher locks **9** on the underside of the chopper base towards each other to release the pusher from the chopper base (see **Fig. E**).



2. Remove the cutting blade **3** or **7** installed on the chopper base.
3. If necessary, use the cleaning tool **6** to remove any food residuals on the push plate **2** (see **Fig. D**).
4. Clean all parts in warm soapy water. Then rinse and dry them thoroughly.
You can also place them on the top rack of a dishwasher for cleaning.
5. After cleaning, replace the pusher and cutting blades onto the chopper base.

Cleaning the base container

- Clean the base container **5** with warm soapy water. Then rinse and dry it thoroughly.
- You can also place the base container on the top rack of a dishwasher for cleaning.

Storage

All parts must be completely dry before storing.

- Put the cutting blades **3** and **7**, and the cleaning tool **6** inside the base container **5**. Close the base container with the lid **8** for storage.
- Always store the food chopper in a cool, dry place. Avoid dust, extreme temperatures, high humidity and direct sunlight.
- Safely store the food chopper out of the reach of children.

Technical data

Model:	50884
Volume of base container:	5.07 cups (1.2 L)
Weight:	21.1 oz (598 g)
Dimensions (L × W × H):	10.71 × 4.72 × 4.25 in. (27.2 × 12 × 10.8 cm)
Product code:	50884

Disposal

Disposing of the packaging

- Sort the packaging before you dispose of it. Dispose of paperboard and cardboard with the recycled paper service and wrappings with appropriate collection service.

Disposing of the food chopper

- Should the food chopper no longer be capable of being used at some point in time, **dispose of it in accordance with the regulations in force in your city or state.**
- Please ensure your recycling information applies to local regulations and the EPA recommendations (www.epa.gov).



IMPORTED BY • IMPORTADO POR:

ALDI INC., BATAVIA, IL 60510

WWW.ALDI.US

MODEL/NO DEL MODELO:
50884

50884

07/2018